

*Switch-Stick Joystick - Model 851*



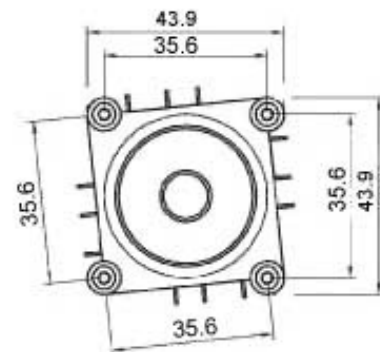
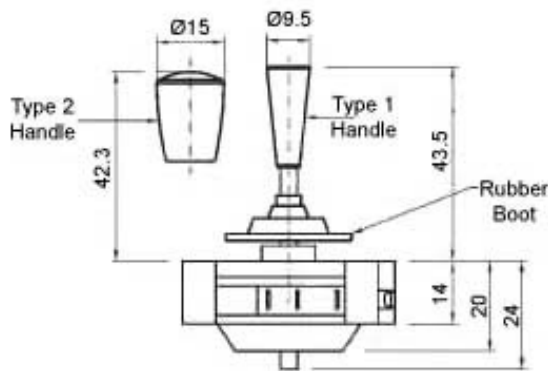
- \* **Single or Dual Axis**
- \* **Spring Return Standard**
- \* **4 Way Switching**
- \* **IP65 Above Panel**
- \* **5A/240VAC Switch Rating**
- \* **Low Cost**

Low cost general purpose switch-stick with 4-way switching. Plastic snap-on limiters for single axis or '+' dual axes pattern are included with each joystick. Robust micro switches are rated up to 5 amps at 240VAC.

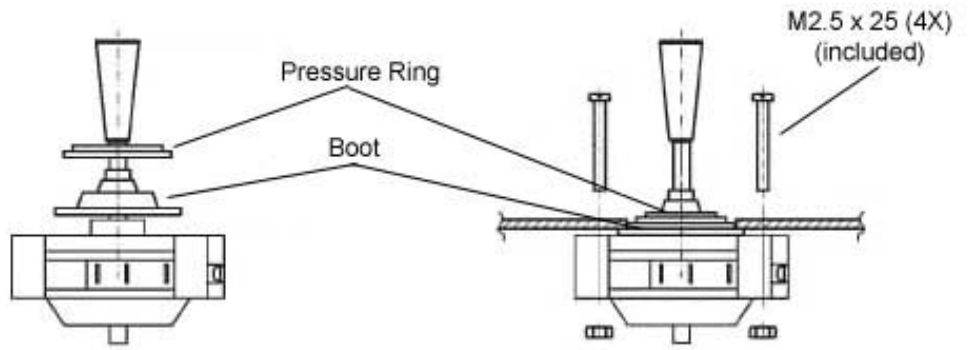
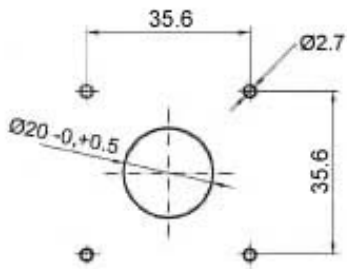
**Joystick Technical Data**

Handle Operating Angle	± 12°
Switch Rating	5 amps, 240VAC
Switch Type	SPDT (4X)
Switch Terminals	Gold
Shaft Material	Steel
Housing Material	Nylon
Limiter Material	Nylon / PVC
Switch MTBF	100,000 operations
Standard Handle Pattern	Omni-Directional

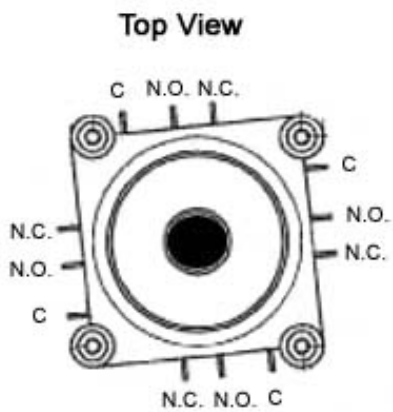
**Joystick Standard Dimensions (mm)**



## Joystick Panel Arrangements and Mounting (mm)



## Joystick Switch Terminations



## Joystick Snap-On Limiter Plates

'+' plus type:  
limits operation  
to one axis at  
a time.



Snaps on to  
bottom of  
joystick

Slotted type:  
single axis  
operation



*P3 America, Inc.*

3089C Clairemont Dr. #363 - San Diego, CA 92117

Phone: (858) 277-1420 Fax: (858) 225-0439

[www.p3america.com](http://www.p3america.com)

© P3 America, Inc. 2004 - 2006. All Rights Reserved