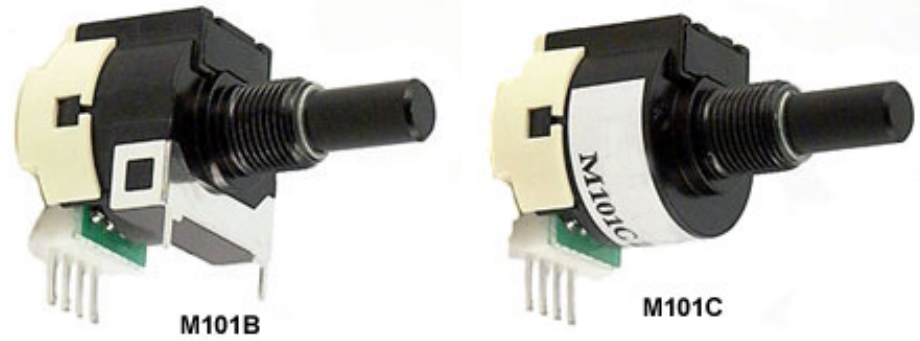


Opto-Electronic Incremental Encoder

M101B / M101C

- b **2 Channels**
- b **50,100 PPR (M101B)**
- b **20 PPR (M101C)**
- b **Long Rotational Life**
- b **Robust Construction**
- b **w/Detents (M101C)**



The M101 series is an economical, reliable panel mount optical encoder. Popular for manual set point applications or as a digital sensor. Suitable for industrial applications. The M101 series incremental encoders are characterized by strong construction, high reliability and long life.

Electrical Specifications	M101B	M101C
Resolution	50, 100 PPR	20 PPR
Channels	2 (A,B)	
Frequency Response	500Hz	100Hz
Supply Voltage	5 VDC \pm 5%	
Current Consumption	26mA nominal, 30mA max.	
Output Voltage	High: 4.2V min. Low: 0.4V max.	

Mechanical Specifications

Rotational Life	2,500,000	2,000,000
Detents	-	Yes
Starting Torque	50 gf-cm max.	
Shaft Radial Load	1.0 kgf	
Shaft Axial Load	1.0 kgf	
Weight	28 grams	

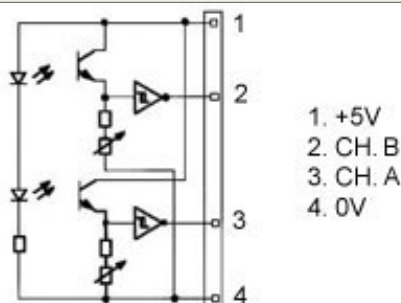
Environmental Specifications

Operating Temperature	0°C to +60°C	
Storage Temperature	-20°C to +80°C	
Humidity	85% RH, no condensation	
Vibration	10 - 55 Hz, 1.5mm, 2 hrs.	
Shock	50G, 6ms, 3 axes, 3 reps	
Protection Grade	IP 40	

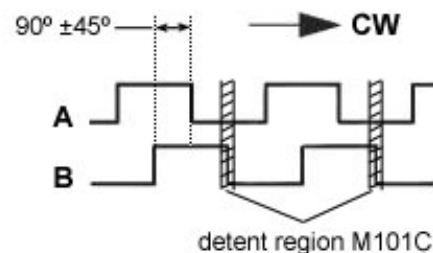
Materials

Housing	Die cast aluminum	
Shaft / Bushing	Metal	

Schematic

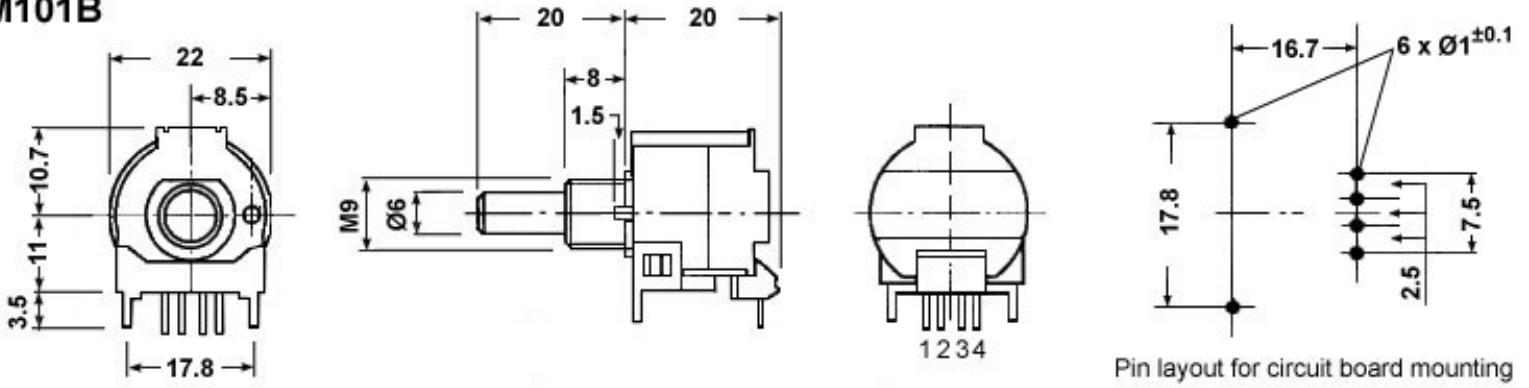


Output Waveform

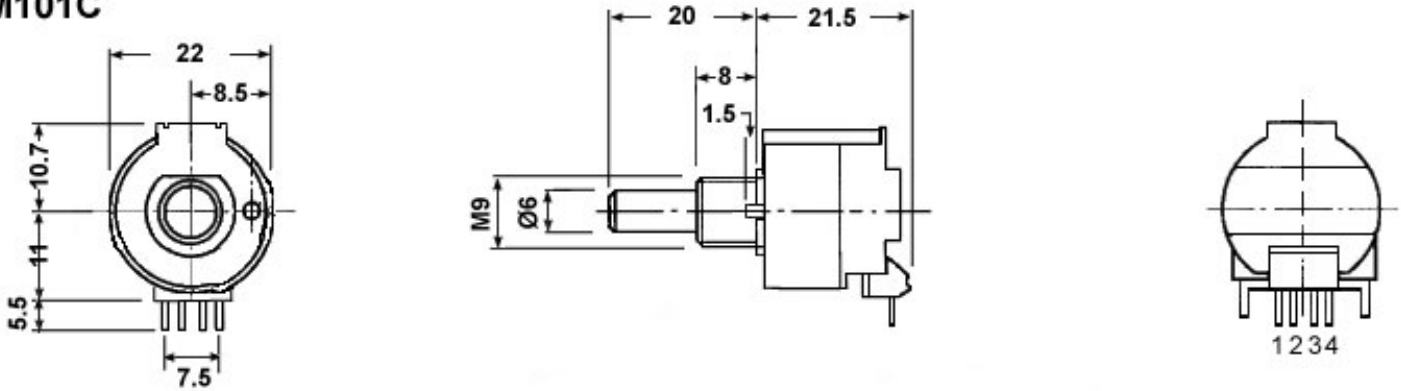


Dimensions (mm)

M101B



M101C



P3 America

3089C Clairemont Dr. #363 - San Diego, CA 92117

Phone: (858) 277-1420 Fax: (858) 225-0439

www.p3america.com

© P3 America 2004. All Rights Reserved