



High Precision

Bushing Mount

Economical

- 10 Million Turns Life
- $\pm 1\%$ Standard Linearity
- All Metal Construction
- Stainless Steel Shaft
- 22mm (7/8") Body Diameter

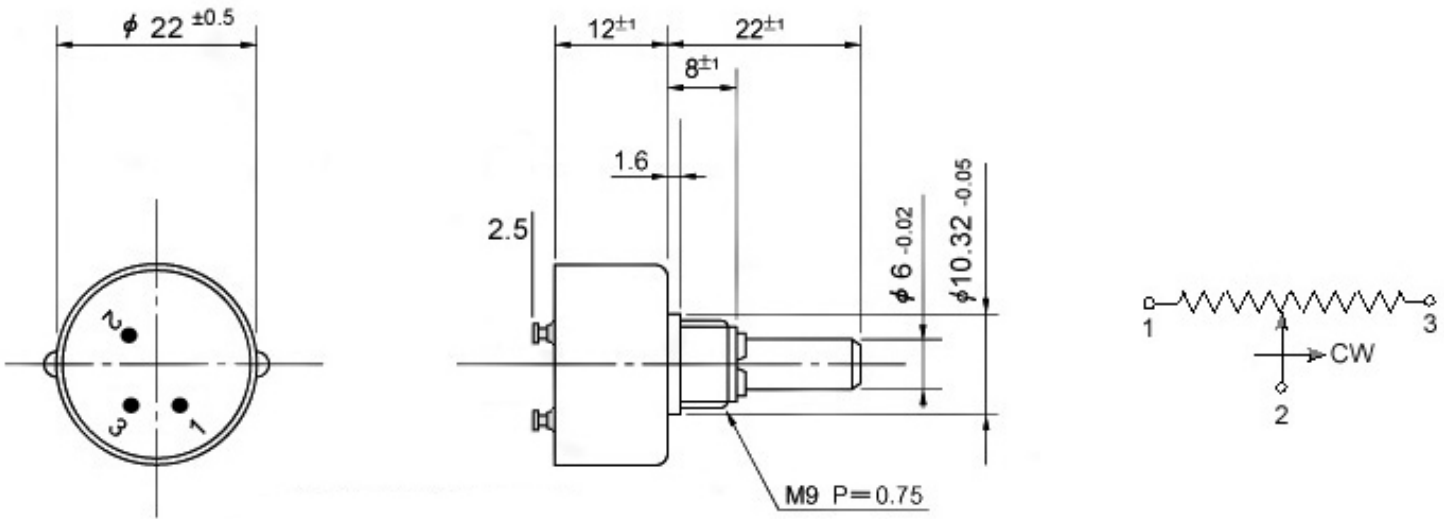
Industry standard design. Conductive plastic element provides infinite resolution in a wide range of resistance values. MP22 features continuous mechanical rotation, MP23 features end stops for 320° rotation. Many options available.

Electrical Specifications	MP 22	MP 23
Resistance Values (ohms)	1K, 2K, 5K, 10K, 20K, 50K, 100K (fractional values available)	
Resistance Tolerance	$\pm 5\%$	
Linearity Tolerance	$\pm 1\%$	
Electrical Angle	320 $\pm 5^\circ$	
Resolution	Essentially infinite	
Insulation Resistance	1000 Mohms @ 1000 VDC	
Dielectric Strength	1000 VAC, 1 minute	
Output Smoothness	<0.1% per MIL-R-39023	
Power	0.2 Watts @ +40°C	
Mechanical Specifications		
Mechanical Angle	360° - continuous (no stops)	320° +10, -0° (with stops)
Starting (max.) Torque (Ncm)	0.5	
Stopper Strength (Ncm)	-	50
Max. Axial Play of Shaft (mm)	0.2	
Max. Radial Play of Shaft (mm)	0.1	
Typical Life (# of turns)	10 million	
Vibration	15G, 10Hz to 2,000Hz	
Shock	50G, 11ms	
Bearing	Sleeve, bushing (servo type available)	
Weight	40 grams	
Environmental Specifications		
Operating Temperature	-55°C to +105°C	
IP Protection Grade	IP40 (IP54 optional)	
Standards	MIL-R-12934	

Materials

Housing	Aluminum
Bushing	Metal
Shaft	Stainless steel
Terminals	Gold plated

Dimensions (mm)



Options

- Rear shaft extension (3mm x 20mm)
- Non standard resistance values
- Extra tap (1 tap max.)
- Special operating angles
- Special shaft shapes
- Sealed housing
- Improved tolerances
- High torque
- Shaft o-ring

P3 America

3089C Clairemont Dr. #363 - San Diego, CA 92117

Phone: (858) 277-1420 Fax: (858) 225-0439

www.p3america.com

© P3 America 2004. All Rights Reserved