

Conductive Plastic Element - IP67 Protection Grade

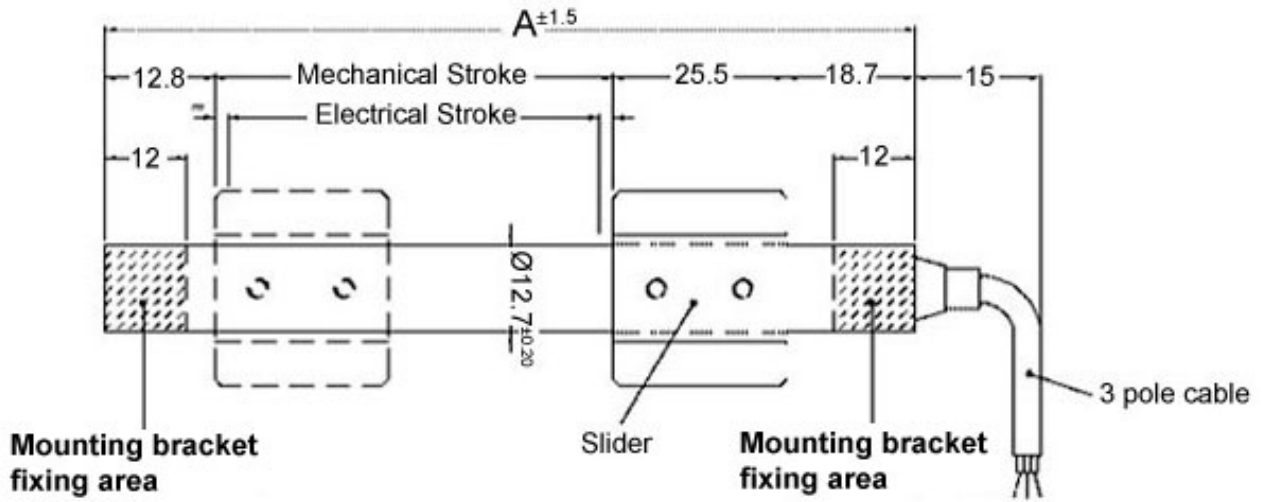


- **Shaft-less - Magnetic Drag Cursor**
- **High Precision**
- **Completely Sealed**
- **100 Million Cycle Life**

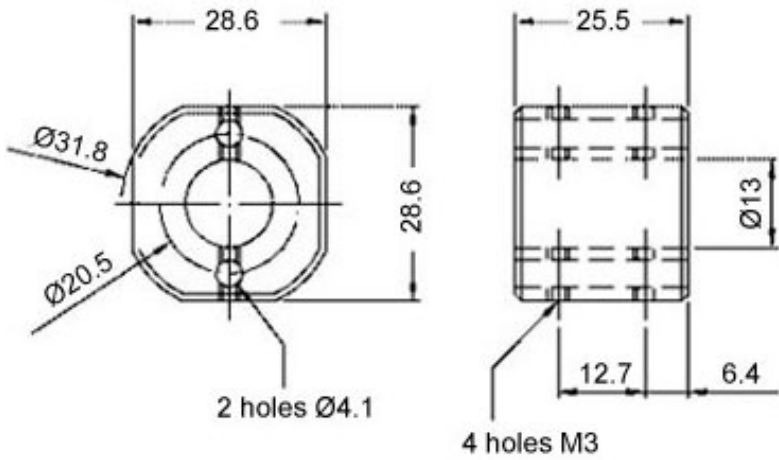
Shaft-less linear motion potentiometer is completely waterproof (IP67). Designed to work in wet environments or temporary submersion. The REM13 is characterized by an external magnetic actuator that couples to the internal cursor (wiper). Adjustable mounting brackets.

Electrical Specifications	50	100	200	300	400	500	600	700	800	900	1000	
Electrical Stroke length (±1mm)	51	101	201	301	401	501	601	701	801	901	1001	
Resistance Value (kohm)	5			10			20					
Resistance Tolerance	±20%											
Linearity Tolerance	±0.1%			±0.05%								
Resolution	Infinite											
Max. Power @ 40°C (W)	1	2	3									
Temperature Coefficient	< 1.5 ppm/°C (actual effect on output voltage)											
Electrical Isolation (Mohm)	>100 @ 500 VDC											
Dielectric Strength	< 500 VAC (50hz)											
Maximum Wiper Current	10 mA											
Recommended Wiper Current	<0.1 µA											
Mechanical Specifications												
Mechanical Stroke Length (±1mm)	55	105	205	305	405	505	605	705	805	905	1005	
Housing Length (A dim.) (mm)	112	162	262	362	462	562	662	762	862	962	1062	
Displacement Speed	5 m/s											
Maximum Acceleration	10 m/s ²											
Typical Life Span	> 25 x 10 ⁶ meters or 100 x 10 ⁶ cycles, whichever is less											
Operating Friction	< 0.5 N											
Environmental Specifications												
Operating Temperature	-30° to +100°C											
Storage Temperature	-50 to +120°C											
Protection Grade	IP67											
Options												
Longer cable lengths	Connector version				Swivel joint on cursor							

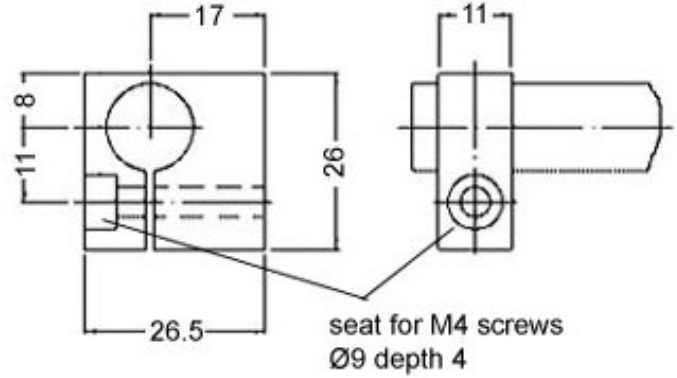
Dimensions (mm)



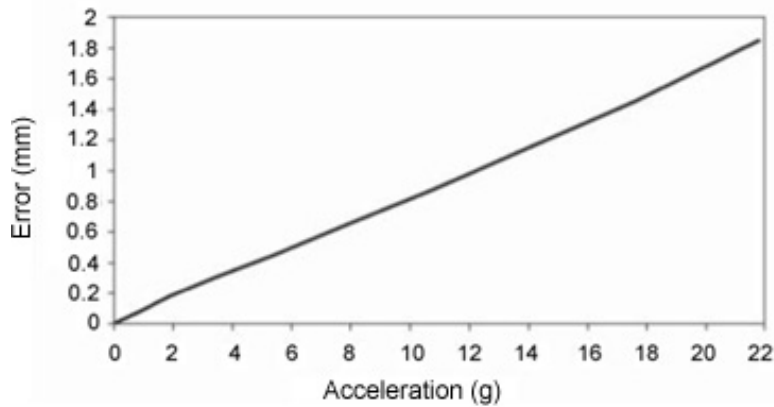
Magnetic Cursor



Mounting Brackets



Tracking Error



P3 America - 3089C Clairemont Dr. #363 - San Diego, CA 92117

Phone: (858) 277-1420 - Fax: (858) 225-0439 - www.p3america.com