



SKK



NKK

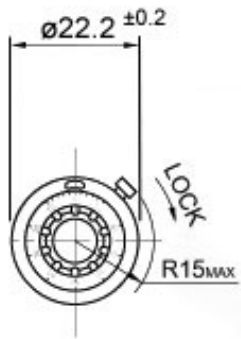
- Flexible Coupling

- 100 Divisions / Turn

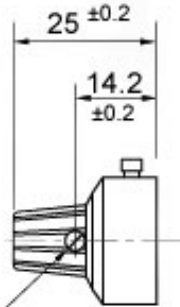
- Shaft Locking Brake

Specifications	SKK	NKK
# of Turns	up to 20	
Dial Divisions	100 / Turn	
Shaft Lock	Yes	
Shaft Diameter (mm) (potentiometer)	3, 3.175, 4, 6, 6.35	6, 6.35
Operating Temperature	-55°C to +85°C	
Fixing	Setscrew	
Material	All metal body / Plastic knob	
Weight	25 grams	50 grams

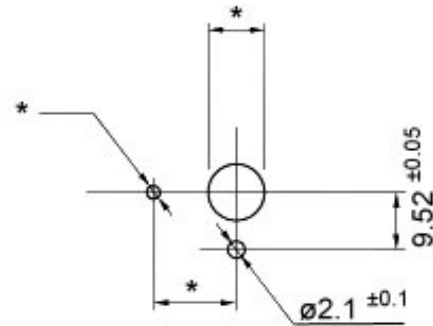
Dimensions (mm)



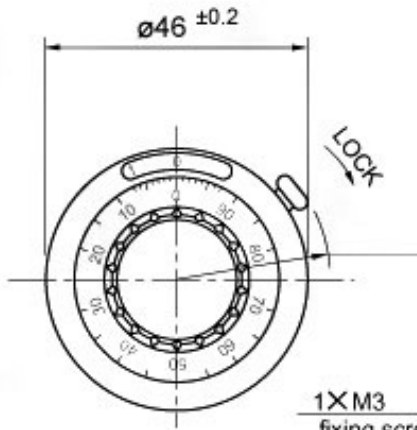
SKK



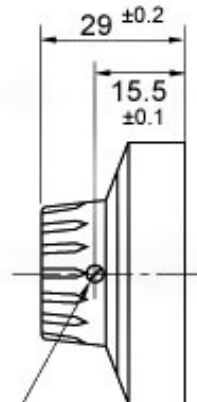
1X M3 fixing screw



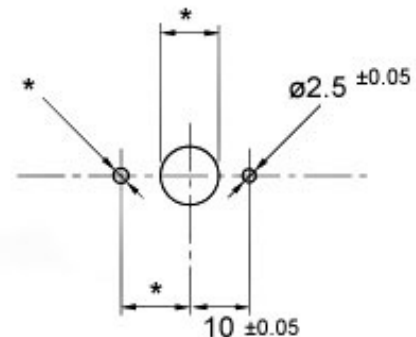
* Dimensions determined by potentiometer shaft and anti-rotation pin dimensions



NKK

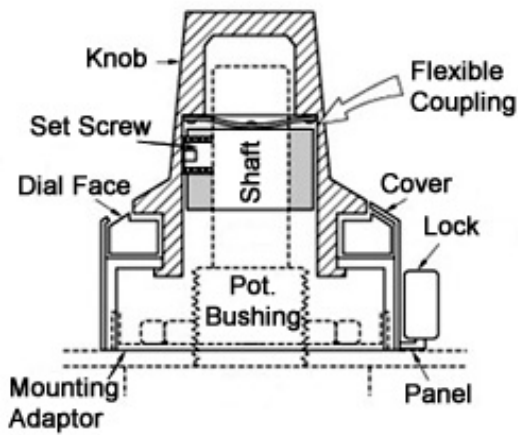


1X M3 fixing screw



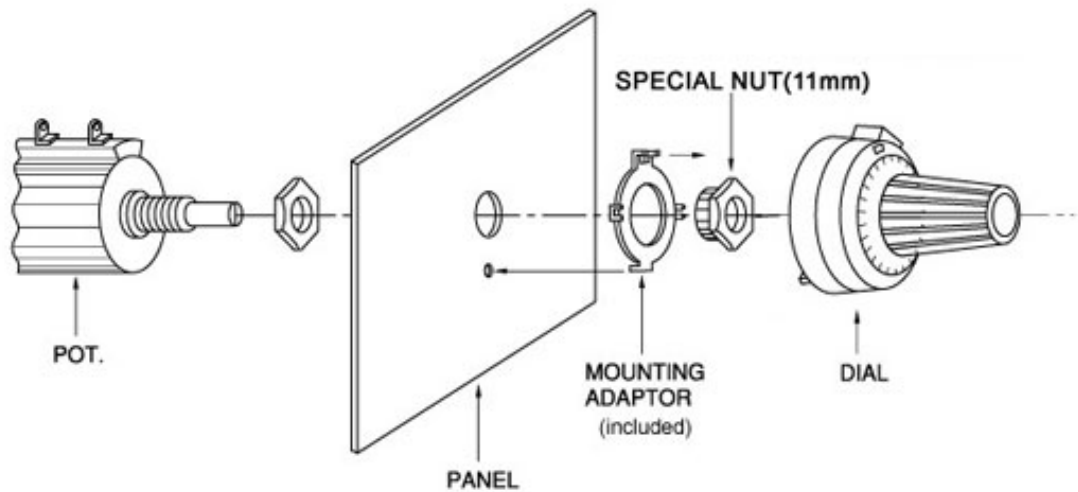
* Dimensions determined by potentiometer shaft and anti-rotation pin dimensions

Cut-Away

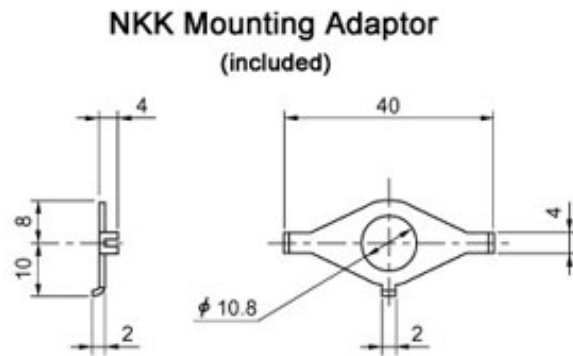
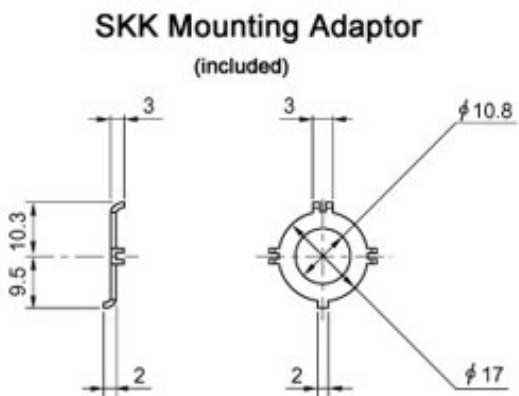


The SKK and NKK turns counting dials incorporate a patented flexible coupling between the shaft of the potentiometer and the dial. Irregular rotation and non-uniform rotational torque problems due to misalignment between the potentiometer shaft and dial are eliminated.

Mounting



Mounting Adaptors



P3 America

3089C Clairemeont Dr. 363 - San Diego, CA 92117

Phone: (858) 277-1420 Fax: (858) 225-0439

www.p3america.com