

Low Cost - Industry Standard Dimensions



- 10 Turns for Accurate Setting
- ±0.25% Standard Linearity
- Long Rotational Life

Electrical Specifications

Electrical Angle	3600° (10 Turns)
Resistance Value (ohms)	100, 200, 500, 1k, 2k, 5k, 10k, 20k, 50k
Resistance Tolerance	±5%
Linearity Tolerance (std.)	±0.25%
End Resistance	0.5% or 10 ohms, whichever is less
Noise	< 100 Ohm ENR
Power @ 70°C	2 W
Insulation Resistance	500 Mohm @ 500 VDC
Dielectric Strength	1000 VAC

Mechanical Specifications

Mechanical Angle	3600° (10 Turns)
Starting Torque	0.5 Oz-in.
Life Expectancy	250,000 cycles
Bearing	sleeve

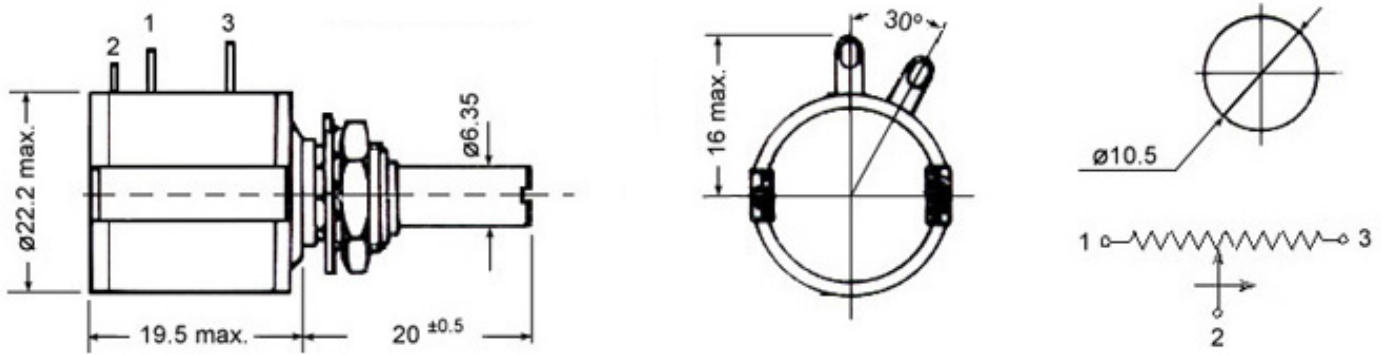
Environmental Specifications

Operating Temperature	-35°C to +105°C
-----------------------	-----------------

Materials

Housing	Thermoset - plastic
Shaft / Bushing	Brass - nickel plated
Terminals	Brass - tin plated

Dimensions (mm)



P3 America, Inc. - 3089C Clairemont Dr. #363 - San Diego, Ca. 92117
 Phone: (858) 277-1420 Fax: (858) 225-0439 www.p3america.com